

Javan Rhino Expedition

Destination: Java, Indonesia

Season: June - July



Expert local rangers and guides to help track down and spot a Javan Rhino



Canoe the secluded rivers where several Javan Rhinos feed and wallow



Set up camera traps, hike rhino trails and stake out mud wallows deep in the forest



The only tour that focuses on Javan Rhinos, we have unique permits granted



Camping inside Ujung Kulon NP – home to all of the world's Javan Rhinoceroses

Dates:

Next group tour: 22nd – 31st July 2019

Private / Tailored Tour information:

This tour is a specialist expedition style trip which focuses on the rarest large mammal in the world, the Javan Rhino.

There is an optional extension to this trip at the beginning of the end which spends 5 nights looking for other endemic mammals of Java. For more information contact us and we can provide a brochure. The best season for looking for mammals in Java is the dry season (June – mid September) and subject to availability the trip can be booked any time in this period. But we recommend the above mentioned dates.

Our Javan Rhino Expedition is limited to 4 people in total due to the strict permit regulations we have to abide by to get into the core area of Ujung Kulon National Park.

If you are interested in booking this trip for less than 4 people on a private tour (outside of our group tour dates) then we can provide quotes for such group sizes – you can find them listed to the right.

We also have flexibility for the duration of trip you would like to book.

The prices are high for an expedition style tour but we have to purchase a very expensive Simaksi permit which is several thousand US Dollars.

Some of our clients prefer to add this trip to other parts of Java or Indonesia and we can organise completely tailor made holidays as well. For more information on these options please let us know.

Prices (2019 season):

Group Tour (10 nights)

£3,495 per person

*last night accommodation in Java £75

Private Tour (10 nights)

£8,495 for a solo traveller

£4,250 per person (2 people)

£3,895 per person (3 people)

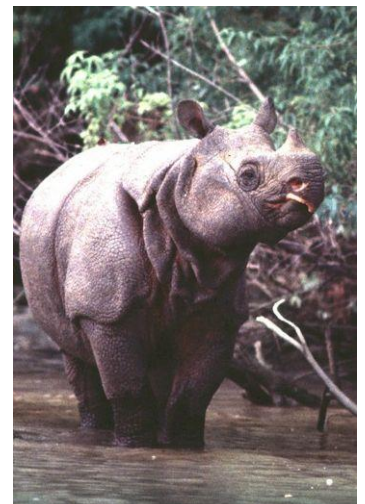
Overview

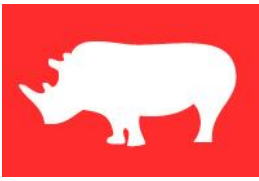
Day 1: Jakarta / Ujung Kulon National Park

Days 2-8: Ujung Kulon National Park

Day 9: Handeluem

Day 10: Jakarta





Tour Information

Introduction

When people think of rhinos they tend to nearly always think of the two African species, these huge herbivores are synonymous with the savannas and grasslands of East and Southern Africa. Another sadder aspect that people think of when they think of rhinos is the illegal demand for rhino horns for the Traditional Chinese Medicine market and decorative dagger handles in the Middle East. However what is not often widely known is that there are more endangered rhinos species than those found in Africa and there is a larger rhino diversity outside of Africa. The white and black rhinos known from Africa are outnumbered by the Indian one-horned, Sumatran and Javan rhinos of Asia.

They are also woefully more endangered than their African cousins, rough estimates for wild rhino populations are: White Rhino: 20,000; Black Rhino: ~5,000; Indian one-horned Rhino: ~2,500; Sumatran Rhino: ~250 and Javan Rhino: ~60. So you can see that despite the bad state of Rhino conservation in Africa the situation is dire in Asia. It gets particularly murky when you talk about the two forest dwelling species (the Sumatran and Javan rhinos) in particular. These animals were poorly understood and not studied when they were abundant throughout the forests of South East Asia and the large islands of Indonesia. So we have very little data collected to try and start to work out what these species need now in order to survive the exponential threat of habitat loss in their range.

We were unfortunately too late to save the rhinos from extinction on the mainland (with the Javan rhino becoming extinct in Vietnam in just 2011) and the two species now have their last strongholds in southern Sumatra (Sumatran rhino) and western Java (Javan rhino). Like many species, we at Royle Safaris believe that through regulated and sustainable eco tourism the species can be saved from extinction. So we have developed this unique itinerary to become the first company to take a small group on an expedition style trip into the park in search of the Javan rhino. We realise that seeing one is far from guaranteed but we believe that we are starting something special here and by bringing a couple of groups per year we will be actively helping to save the species from going extinct.

This is a unique tour that explores part of the world that are rarely visited, and so to get a good idea of what to expect we recommend you read through the below information thoroughly.

We have outlined a detailed itinerary for the entire trip. However due to the movements of the rhinos and other factors (such as tides, vegetation cover, weather etc) we will change the itinerary to give us the best possible chance of seeing a rhino.

Rest assured that whether we see a rhino or not you will be among the first ever non-scientists to ever attempt a sighting in the core area of the park and pioneers at the start of ecotourism here that could save the Javan rhino.

Itinerary

Day 1 **Jakarta / Carita / Ujong Kulon NP**

Arrival & Travelling

Accommodation:

Forest Campsite
(Camping)

Food:

Lunch will be served en route to the park and then dinner will be prepared by the camp staff.

Transportation:

Private Vehicle,
Private Boat &
Walking.

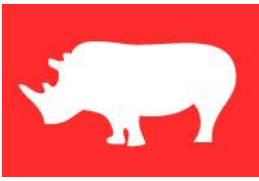
We have recommended that clients arrive in Jakarta the day before the tour is due to start. This makes it easier as we will start to collect all clients (from their hotels) at around 5am (time to be confirmed nearer the time), we want to start as early as possible so that we can get to the park and set up camp before dark.

So once we have collected the group together we will head towards the western tip of the island of Java and the forest park of Ujong Kulon National Park.

The drive will take around 3 hours or so to get to Carita, from here we will get into a speed boat and cruise along the coast to the park's gateway. This boat trip will take round 2.5 hours and we will have lunch on board the boat. We will travel by the boat to Taman Jaya and then land at Laban in the park.

Where we will explore once in the park may well vary from what is documented in the next few days and will be dependant on what the local guides and rangers recommend based on their experience and the recent movements of the rhinos. Being an expedition style trip a great amount of flexibility is needed and we will do everything we can to make sure we are in the right place at the right time to try and see one.

We will hike south towards Karang Ranjang, searching for signs of the rhinos along the way, we will have the camp close but not too close to where we focus most of our efforts. Today's hike could be around 3 hours long, on arrival at the camp we will set up and settle in with some dinner. If the light is still good and people still have some energy we can take a little walk around. However we recommend that we are up and ready for the morning canoe along the Cikeusik River at dawn (or pre-dawn) so a good night's rest is a good idea tonight.



Days 2-8 **Ujong Kulon National Park**

Javan Rhino Tracking

Accommodation:

Forest Campsite
(Camping)

Food:

All of your meals will be prepared and eaten at the camp in between our excursions into the forest.

Transportation:

Walking & Canoe.

For the next 7 full days we will explore the forest as we search for the Javan rhino, we will rise early each morning as we aim to find a rhino as they use the river to bath and browse on the semi aquatic vegetation. In the past this has been one of the most fruitful ways to find and see the rhino. So by using a couple of canoes we will silently paddle up and down stretches of the Cikuesik River (and possibly other rivers nearby) for a while in the hope that we see one. We will come back to the camp for breakfast and then plan the next course of action, we will probably look to cruise the rivers at dawn and dusk and also have the opportunity to set up hides overlooking some of the wallows that the rhinos like to use. This is an option for anyone wishing to do this and of course we can hike around and try and find fresh evidence of the rhinos as they move through the forest.

As mentioned this is just an overview of what is possible and the exact day by day plan will change and be discussed and dictated by the rhino's movements.

Alongside the rhinos there are many other species in the park, like all tropical forests there are many species of birds, reptiles and amphibians. Mammal wise there are Javan gibbons and ebony lutungs (both endemic to Java) in the trees, various squirrels around, Javan small-toothed palm civets, bantengs and even leopards in the park. However the leopards have a near mythical status here and the rhinos are seen a lot more often.

It is also worth keeping an eye out in the rivers and sea as there are salt-water crocodiles here and so be careful when near the river banks and keep your hands and feet inside the canoe at all times.

We will return to the camp for our meals and of course our tents for each night. We estimate that hiking per day will be around 2-3 hours, however some days maybe longer (~6 hours) and others much shorter.

Day 9 **Handeleum**

Travelling & Rest

Accommodation:

Handeleum Guest House (Local Guest House)

Food:

Breakfast will be served in the camp, lunch en route and dinner at the guest house.

Transportation:

Private boat & Canoe.

Today's plan is very flexible, it all depends on where we have been camping, we may head straight from the camp back to Laban and catch the speed boat back to Carita from there, or we may get a boat to Handeleum Island. It all depends on how things have gone and what the rhino movements have dictated. If we do go to Handeleum we will take a boat for around 2 hours and on arrival there we could have the chance to canoe the Cigenter River. This was widely regarded as the best place to see Javan rhinos for many years, however many tourists came here (because of its proximity to the entry gate) and seemingly disturbed the rhinos that used to use this river a lot. Since then the sightings here have been very low, but if we are here we will give it a go as you never know.

Day 10 **Jakarta**

Travelling

Accommodation:

NA

Food:

Breakfast is the only meal included today.

Transportation:

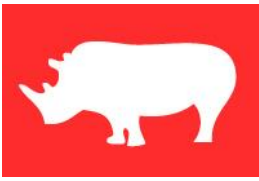
Private Boat & Private Vehicle.

Whilst the expedition officially ends today when we reach Jakarta and people can book their return flights home for the evening on this day, we recommend that people do not and instead book their return flights home for tomorrow. This is because of any possible delays we can suffer in having to use the speed boat and a vehicle for 2 and 3 hours respectively. Of course if you book your flights for today you will be taken to the airport after we reach Jakarta and if you book your flights for the next day, we will take you to the hotel you have booked for yourself.

We can book this hotel for you if you wish, at the additional cost of GBP £75 per person.

Your tour and all Royle Safaris services end upon transfer to the airport

Please note that the itinerary stated above is correct as our planned intentions for the tour. However adverse weather conditions and other local considerations can necessitate some modifications of the itinerary during the course of the tour; any chances will be made to make the best of the time, weather conditions and other constraints forced upon us and all changes will be made in conjunction with our terms and conditions.



Tour Inclusions

Absolutely everything mentioned in the above itinerary is included (except where it is expressly mentioned as an optional extra).

- All accommodation as mentioned above or of a similar standard as mentioned.
- All meals as mentioned in the itinerary; ***please note that some lunches and dinners are not included when staying in Jakarta in this itinerary.***
- Bottled mineral or purified (boiled) water will be provided throughout and on request (warmed water for washing will also be provided when camping).
- Private vehicles and speed boats for all transfers.
- Local drivers and skippers with years of experience in working in the areas we are travelling.
- When on the expedition you will have a specialist ranger from the park and a camp cook.
- We will have 2 porters to carry our food and camping gear.
- All fuel, tolls, taxes and other expenses relating to driving and boat transfers.
- All wildlife watching and cultural activities as mentioned in the itinerary.
- Entrance fees and permits to all locations for wildlife watching mentioned. Including the special SIMAKSI permit which is needed to go into the core area we are visiting.
- All camping equipment (except for mosquito net), including sleeping bag, tents, cooking equipment and ground mats and pillow etc, when camping in Ujong Kulon National Park.
- Field guides will be available for reference whilst on the trip.
- Use of canoes and hides when looking for rhinos.
- Royle Safaris zoologist escort throughout (where available)

Tour Exclusions

Nearly everything you will need is included in the price you have already paid for the tour. However there are some things not included.

- International flights to and from the tour start and end points.
- Travel insurance including any fees that result from emergency medical or evacuation needs.
- Visa fees for entering the country(s).
- Vaccinations and any medication are not included.
- Any food other than the meals provided and mentioned in the above itinerary; please note that some lunches and dinners when staying in Jakarta are not included in this itinerary
- Some meals will include a drink (such as juice, tea & coffee at breakfast) but most soft drinks and alcohol are an extra expense.
- Any items of a personal nature are not included, such as souvenirs, medication, toiletries, laundry and phone calls.
- Tips are also not included. There is no hard and fast rule for tipping in Indonesia. However we would appreciate it, if you have been happy with the service of the guides and camping team then please tip a little something at the end of the complete excursion. For local guides we hire for individual activities please tip individually and also if there are tip boxes in restaurants, camps, lodges and hotels then these are generally used for tipping all of the staff.
- Porterage for carrying your luggage to and from the campsite – they are hireable and payable direct to the porter.
- Any departure taxes which may be due when leaving are not included (but may be included in the cost of your flights).