



Sunda pangolin (*Manis javanica*). People I already know can ask for the exact location.

Singapore, September 18-19 and 28-29, 2019

VLADIMIR DINETS

In September 2019 I spent a couple days in Singapore on the way to/from Sulawesi. I was with my family, so could devote only short time to mammalwatching. Still, the city's parks are so full of life that I found a bunch of interesting species. Most of the locations listed below were recommended by Kenneth Chin (thanks a lot!).

Singapore has 50+ resident species of native land mammals. Although the diversity is much lower than in Malaysia, some mammals are easier to find and/or approach than elsewhere, and many are easier to identify. An annotated (and very optimistic) checklist can be found at https://ipfs.io/ipfs/QmXoypizjW3WknFiJnKLwHCnL72vedxjQkDDP1mXWo6uco/wiki/List_of_mammals_of_Singapore.html.

Everything in Singapore, including driving, is very easy, but expect delays during rush hours.

We stayed at an hotel called Orchid Country Club, where **pouched tomb bats** (*Saccolaimus saccolaimus*) and **lesser yellow house bats** (*Scotophilus kuhlii*) were flying around the golf course and drinking from the pool (1.411044N 103.844910E) at night.

Mandai Trail (trailhead at 1.410589N 103.778336E) had incredible density of **Sunda colugos** (*Galeopterus variegatus*): in 4 hours of spotlighting I saw 16, some at very close range. Without a thermal imager I would've still found at least half of them. Other species seen were **Sumatran palm civet** (*Paradoxurus musangus*), **sambar** (*Cervus unicolor*, reintroduced, at least 8 individuals), **lesser mouse deer** (*Tragulus kanchil*), **brown spiny rats** (*Maxomys surifer*), **Malaysian wood rats** (*Rattus tiomanicus*), and **Annandale's rats** (*Sundamys annandalei*, previously in *Rattus*). **Lesser short-nosed fruit bats** (*Cynopterus brachyotis*) were feeding in trees above the trail, and could also be observed at close range. In one fruiting tree they were joined by a **dusky fruit bat** (*Penthetor lucasi*). Small bats slowly flying across the trail were apparently **brown tube-nosed bats** (*Murina suilla*), while those flying fast along the trail and occasionally night-roosting on low branches were **glossy horseshoe bats** (*Rhinolophus lepidus*). There were **boar** (*Sus scrofa*) digs, and lots of owls and nightjars.

Bukit Timah Nature Reserve (1.348541N 103.776763E) also had lots of **Sunda colugos**, plus one **Horsfield's flying squirrel** (*Iomys horsfieldii*), one **Sumatran palm civet**, many Sunda scops-owls, and two beautiful pit vipers. Kenneth and I spent only a couple hours there; it certainly deserves more.

Rifle Range (trailhead at 1.355033E 103.797169E) is said to be the best place for lorises, but Kenneth and I didn't find any in an hour of searching, probably because of bright moonlight. We saw one **red spiny rat** (*Maxomys rajah*), and a happy gathering of **Oriental house rats** (*Rattus rattus tanezumi*) along the access road.

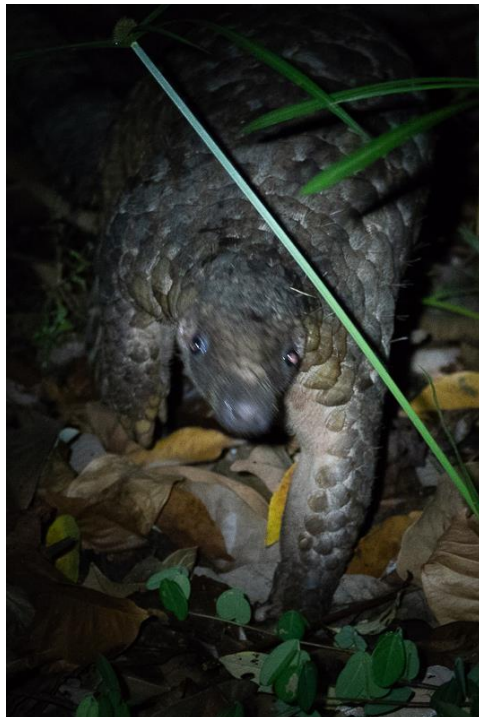
Botanical Garden (open 5:00-midnight) is a good place to see **common tree-shrew** (*Tupaja glis*), **plaintain squirrel** (*Callosciurus notatus*) and **slender squirrel** (*Sundasciurus tenuis*). At night there were **cave nectar bats** (*Eonycteris spelaea*) in Ginger Garden (1.310932N 103.815193E), **Oriental house rats** along the rainforest trail (1.311600N 103.815468E), and **Malaysian wood rats** in tall trees at 1.315072N 103.815958E.



Lesser short-nosed fruit bat (*Cynopterus brachyotis*)



Javanese flying squirrel (*Iomys horsfieldii*)



Annandale's rat (*Sundamys annandalei*) and Sunda pangolin



Sumatran palm civets (*Paradoxurus musangus*)



Sunda colugos (*Galeopterus variegatus*)

