

# Uganda

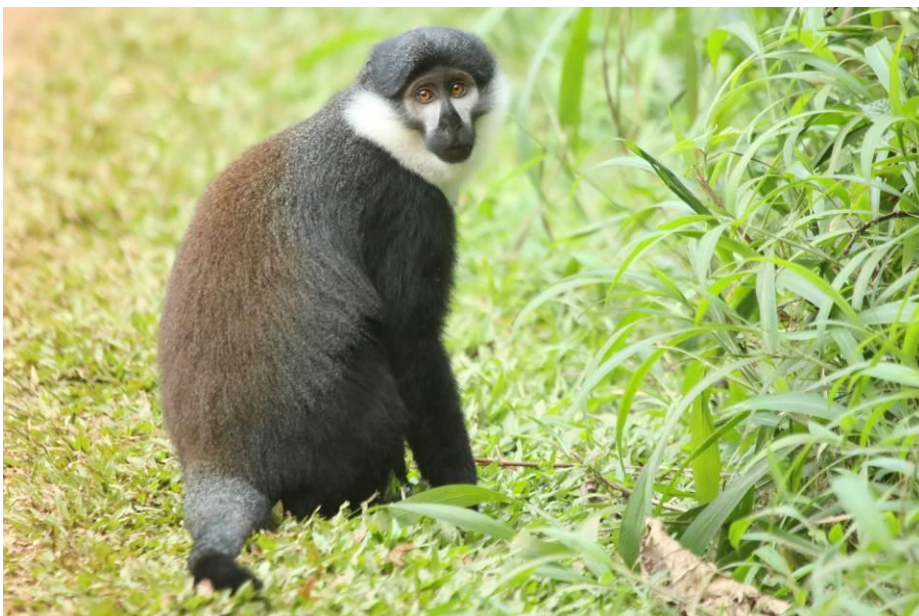
## June 2017



<b>12<sup>th</sup> June</b>	Early arrival Entebbe. Drive to Murchison, via Ziwa Rhino Sanctuary. o/n Fort Murchison Lodge, ( <a href="http://www.naturelodges.biz/fort-murchison/">http://www.naturelodges.biz/fort-murchison/</a> )
<b>13<sup>th</sup></b>	Murchison Falls National Park: morning game drive, afternoon boat trip up to Murchison Falls. o/n Fort Murchison Lodge
<b>14<sup>th</sup></b>	Drive south to Kibale o/n Primate Lodge ( <a href="https://ugandalodges.com/primate/">https://ugandalodges.com/primate/</a> )
<b>15<sup>th</sup></b>	Kibale National Park: full day Chimpanzee Habituation experience o/n Primate Lodge
<b>16<sup>th</sup></b>	Morning visit to Bigodi Community Reserve (Bigodi Swamp) Afternoon spent in the 'tree house' at Primate Lodge overlooking the clearing hoping (but failing) to see Forest Elephant Guided night walk from the National Park HQ ( <i>\$40 each, guide spent most of the time talking on his mobile phone, definitely not worth the money</i> ) o/n Primate Lodge
<b>17<sup>th</sup></b>	Drive to Queen Elizabeth NP, short evening game drive (essentially a successful but pretty unsatisfying Leopard twitch) o/n Queen Elizabeth Bush Lodge ( <a href="http://www.naturelodges.biz/the-bush-lodge/">http://www.naturelodges.biz/the-bush-lodge/</a> )
<b>18<sup>th</sup></b>	Morning game drive, QENP Afternoon boat trip along Kazinga Channel, from Mweya Safari Lodge o/n Queen Elizabeth Bush Lodge
<b>19<sup>th</sup></b>	Drive south through QENP: Ishasha sector, and then south to Bwindi o/n Buhoma Community Rest Camp ( <a href="http://www.buhomecommunity.com/">http://www.buhomecommunity.com/</a> )
<b>20<sup>th</sup></b>	Bwindi Impenetrable Forest National Park: morning gorilla tracking o/n Buhoma Community Rest Camp
<b>21<sup>st</sup></b>	Morning birding along the main track through the Buhoma sector, Bwindi Impenetrable Forest NP, and visit to Batwa community through 'Batwa Experience', Buhoma o/n Buhoma Community Rest Camp
<b>22<sup>nd</sup></b>	Drive through Bwindi – Ruhija sector, then to Lake Mburo NP o/n Rwakobo Rock Lodge ( <a href="https://www.rwakoborock.com/">https://www.rwakoborock.com/</a> )
<b>23<sup>rd</sup></b>	Lake Mburo NP: morning game drive including visit to Mihingo Lodge Afternoon boat trip on Lake Mburo Night drive with park guide ( <i>\$30 per person, park guide was excellent, well worth the money</i> ) o/n Rwakobo Rock Lodge
<b>24<sup>th</sup></b>	Drive from Lake Mburo to Entebbe o/n Lake Victoria View Guesthouse ( <a href="http://www.victoriaviewguesthouse.com/">http://www.victoriaviewguesthouse.com/</a> )
<b>25<sup>th</sup></b>	Entebbe Botanical Gardens Late night flights from Entebbe

	12 <sup>th</sup>	13 <sup>th</sup>	14 <sup>th</sup>	15 <sup>th</sup>	16 <sup>th</sup>	17 <sup>th</sup>	18 <sup>th</sup>	19 <sup>th</sup>	20 <sup>th</sup>	21 <sup>st</sup>	22 <sup>nd</sup>	23 <sup>rd</sup>	24 <sup>th</sup>	25 <sup>th</sup>
<b>Primates</b>														
<b>Chimpanzee</b> <i>Pan troglodytes schweinfurthi</i> Kibale NP, 15 <sup>th</sup> . A lone young female feeding high in fig trees in the morning, and much of the afternoon spent with a troop of around 25.				X										
<b>Mountain Gorilla</b> <i>Gorilla beringei beringei</i> Bwindi Impenetrable Forest NP. The morning spent with the 'Habinyanja' group on 20 <sup>th</sup> . A second family appeared at the track-side during a visit to the Batwa community on 21 <sup>st</sup>									X					
<b>Uganda Red Colobus</b> <i>Procolobus (rufimitratus) tephrosceles</i> A troop in the grounds of Primate Lodge (15 <sup>th</sup> ) and a troop at Bigodi Swamp (16 <sup>th</sup> )				X	X									
<b>Eastern Black-and-white Colobus</b> <i>Colobus guereza</i> By Karuma Falls bridge (12 <sup>th</sup> ), Kibale NP, Bwindi Impenetrable Forest NP and in Entebbe Botanic Gardens	X			X	X			X			X			X
<b>Olive Baboon</b> <i>Papio anubis</i>	X	X	X	X	X	X	X	X			X	X	X	
<b>Uganda Grey-cheeked Mangabey</b> <i>Lophocebus ugandae</i> Two small troops in Kibale NP, 15 <sup>th</sup>				X										
<b>Patas Monkey</b> <i>Cercopithecus patas</i> Several troops seen at the roadside through Murchison Falls NP		X	X											
<b>Tantalus Monkey</b> <i>Cercopithecus tantalus</i> Seen in/around Ziwa Rhino Sanctuary, Murchison Falls NP, Queen Elizabeth NP & Bwindi Impenetrable Forest NP	X	X	X				X	X			X			
<b>Vervet Monkey</b> <i>Cercopithecus pygerrhus</i> The monkeys in Lake Mburo NP, with black hands/feet, seem to be good for Vervet?											X	X	X	
<b>Blue Monkey</b> <i>Cercopithecus mitis</i> One troop at the roadside in the Ruhija sector of Bwindi Impenetrable Forest NP											X			
<b>Red-tailed Monkey</b> <i>Cercopithecus Ascanius</i> Seen in Kagora Forest Reserve, Kibale NP, Bwindi Impenetrable Forest NP			X	X	X					X				
<b>Greater Galago</b> <i>Otolemur crassicaudatus</i> Two (seemed to be an adult and a young animal) seen during the night drive at Lake Mburo NP: essentially a ball of black fur at the top of a tree with two sets of eye shine													X	
<b>Demidoff's Dwarf Galago</b> <i>Galagoides demidovii anomurus</i> Three small bushbabies seen high in the canopy during the night walk at Kibale NP: identified as Demidoff's by the park guide					X									
<b>Insectivores</b>														
<b>Yellow-winged Bat</b> <i>Lavia frons</i>		X					X				X	X		
<b>unidentified bats</b> one hanging on the mosquito net in the room at Queen Elizabeth Bush Lodge (perhaps Ansorge's Wrinkle-lipped Bat?), and probably two species at Rwakobo Rock, Lake Mburo NP: one smaller, grey-brown species hunting through the dining room and a larger, paler bat feeding around the canopy of a (not fruiting) fig tree.						X	X				X	X		
<b>unidentified shrew</b> one dead animal in Entebbe Botanic Garden														X





Top: Chimpanzee and Patas Monkey; Middle: Uganda Grey-cheeked Mangabey and Red-tailed Monkey;  
Bottom: L'Hoest's Monkey and Eastern Black-and-White Colobus

	12 <sup>th</sup>	13 <sup>th</sup>	14 <sup>th</sup>	15 <sup>th</sup>	16 <sup>th</sup>	17 <sup>th</sup>	18 <sup>th</sup>	19 <sup>th</sup>	20 <sup>th</sup>	21 <sup>st</sup>	22 <sup>nd</sup>	23 <sup>rd</sup>	24 <sup>th</sup>	25 <sup>th</sup>
<b>Lagomorphs &amp; Rodents</b>														
<b>Bunyoro Rabbit (Uganda Grass Hare)</b> <i>Poelagus marjorita</i> Seen near the tents at Fort Murchison Lodge: 2 on the evening of 12 <sup>th</sup> , 1 on 13 <sup>th</sup>	X	X												
<b>Savannah Hare</b> <i>Lepus microtis</i> One near Queen Elizabeth Bush Lodge and six during the night drive at Lake Mburo NP								X				X		
<b>Striped Ground Squirrel</b> <i>Euxerus erythropus</i> Singles in Murchison Falls NP and Lake Mburo NP, and quite common in Entebbe Botanic Gardens.		X										X		X
<b>Carruther's Mountain Squirrel</b> <i>Funisciurus carruthersi</i> One near the park HQ, Ruhija sector of Bwindi Impenetrable Forest NP											X			
<b>Red-legged Sun Squirrel</b> <i>Heliosciurus rufobrachium</i> In the forest at Kibale NP, around the grounds at Buhoma Community Rest Camp (Bwindi) and a brief squirrel sighting high in the trees at Entebbe Botanic Gardens				X	X	X		X						?
<b>Unstriped Grass Rat</b> <i>Arvicanthis niloticus</i> One near the Queen Elizabeth Pavilion, QENP						X								
<b>unidentified rodents:</b> a very brief rat sp at Primate Lodge (14 <sup>th</sup> ) and a medium-sized, black-brown, short-tailed rodent on the edge of a papyrus swamp in QENP (18 <sup>th</sup> )														
<b>Carnivores</b>														
<b>Side-striped Jackal</b> <i>Canis adustus</i> Four together, Murchison Falls NP		X												
<b>Spot-necked Otter</b> <i>Lutra maculicollis</i> One (very) brief sighting disappearing at speed into dense papyrus at Mabamba Swamp													X	
<b>Banded Mongoose</b> <i>Mungos mungo</i> Mongoose mobs crossing the road in Murchison NP and Lake Mburo NP, and a habituated group outside the main receptions at Mweya Safari Lodge, QENP		X					X					X		
<b>Dwarf Mongoose</b> <i>Helogale parvula</i> Two small mobs at Lake Mburo NP											X	X		
<b>Slender Mongoose</b> <i>Herpestes sanguinea</i> Singles in Lake Murchison NP and Lake Mburo NP		X											X	
<b>Marsh Mongoose</b> <i>Atilax paludinosus</i> One feeding on the shores of Lake Mburo during the afternoon boat trip, apparently unconcerned by the boat												X		
<b>White-tailed Mongoose</b> <i>Ichneumia albicauda</i> One dead on the roadside just outside Mbarara, and five seen during the night drive in Lake Mburo NP, all foraging in a recently-burned area											D	X		
<b>Blotched Genet</b> <i>Genetta maculata</i> Six genets seen during the night drive in Lake Mburo NP: all but one had large, rectangular, dark-rimmed 'spots.												X		
<b>Common Genet</b> <i>Genetta genetta</i> One near the room at Primate Lodge, Kibale NP. One of the genets seen during the night drive in Lake Mburo NP had small, round, discrete spots and was perhaps this species? I didn't check tail tips...			X										?	





Top: Side-striped Jackal and Bunyoro Rabbit; Middle: Striped Ground Squirrel and Carruther's Mountain Squirrel  
Bottom: Banded Mongoose and Marsh Mongoose

	12 <sup>th</sup>	13 <sup>th</sup>	14 <sup>th</sup>	15 <sup>th</sup>	16 <sup>th</sup>	17 <sup>th</sup>	18 <sup>th</sup>	19 <sup>th</sup>	20 <sup>th</sup>	21 <sup>st</sup>	22 <sup>nd</sup>	23 <sup>rd</sup>	24 <sup>th</sup>	25 <sup>th</sup>
<b>Leopard</b> <i>Panthera pardus</i> One seen fairly distantly, resting in long grass at QENP						X								
<b>Lion</b> <i>Panthera leo</i> Two females and, separately, two males at QENP during the morning of 18 <sup>th</sup> : all dozing until the day heated up and they walked off into the shade of dense bushes.							X							
<b>Hyrax and Elephant</b>														
<b>Western Tree Hyrax</b> <i>Dendrohyrax dorsalis</i> Two in the grounds of Mihingo Lodge, Lake Mburo NP (whilst searching, unsuccessfully, for Klipspringers)												X		
<b>Savannah Elephant</b> <i>Loxodonta Africana</i> Seen in Murchison Falls NP and QENP, where animals came to drink and wallow at Queen Elizabeth Bush Lodge every evening		X				X	X	X						
<b>Forest Elephant</b> <i>Loxodonta cyclotis</i> Abundant signs through the forest at Kibale, with animals seen (with warning shots fired by the forest rangers) by Chimpanzee trackers on both days, and at Bwindi Impenetrable NP.				S	S						S			
<b>Odd-toed Ungulates</b>														
<b>Grant's Zebra</b> <i>Equus quagga boehmi</i> Lake Mburo NP											X	X		
<b>Southern White Rhinoceros</b> <i>Ceratotherium simum simum</i> Three mother-and-calf duos and a single adult male seen in the Ziwa Rhino Sanctuary, 12 <sup>th</sup>	X													
<b>Even-toed Ungulates</b>														
<b>Hippopotamus</b> <i>Hippopotamus amphibious</i> Common in Murchison Falls NP, QENP and Lake Mburo NP		X				X	X	X				X		
<b>Bush Pig</b> <i>Potamochoerus larvatus</i> A sounder of at least 6 (very ginger) animals seen moving (fast and brief) through a swampy clearing at Kibale NP. I had heard about animals being regular visitors to the grounds of Primate Lodge: none of the staff there knew anything about this, and our park guide said this sighting was his first in 9 months of working there.				X										
<b>Giant Forest Hog</b> <i>Hylochoerus meinertzhageni</i> Two different family groups visited the wetland visible from rooms at Queen Elizabeth Bush Lodge, from around 3pm both afternoons, spending time wallowing in the mud and feeding through the marsh. On 17 <sup>th</sup> they were socialising quite happily with a pair of Warthogs, until chased off by a young male Elephant. One young male feeding around the rooms on 17 <sup>th</sup> , and at least one heard close to the rooms both nights.  (video at <a href="https://youtu.be/77iq_6oV6zo">https://youtu.be/77iq_6oV6zo</a> )						X	X							
<b>Common Warthog</b> <i>Phacochoerus africanus</i>	X	X				X	X	X				X		
<b>Rothschild's (Northern) Giraffe</b> <i>Giraffa camelopardalis rothschildi</i> Common in Murchison Falls NP. 11 of the 14 (re-)introduced animals seen in Lake Mburo NP		X										X		
<b>Impala</b> <i>Aepyceros melampus</i> Lake Mburo NP											X	X		
<b>Defassa Waterbuck</b> <i>Kobus defassa</i> Common in/around Ziwa Rhino Sanctuary, Murchison Falls NP, QENP and Lake Mburo NP	X	X				X	X	X				X	X	





Top: Southern White Rhinoceros and Savannah Elephant; Middle: Giant Forest Hog  
Bottom: Rothschild's Giraffe and Grant's Zebra



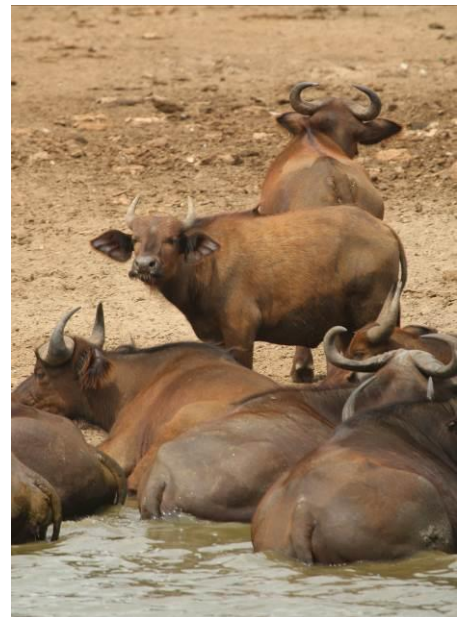
	12 <sup>th</sup>	13 <sup>th</sup>	14 <sup>th</sup>	15 <sup>th</sup>	16 <sup>th</sup>	17 <sup>th</sup>	18 <sup>th</sup>	19 <sup>th</sup>	20 <sup>th</sup>	21 <sup>st</sup>	22 <sup>nd</sup>	23 <sup>rd</sup>	24 <sup>th</sup>	25 <sup>th</sup>
<b>Uganda Kob</b> <i>Kobus thomasi</i> Common in/around Ziwa Rhino Sanctuary, Murchison Falls NP and QENP	X	X	X			X	X	X						
<b>Eastern Bohor Reedbuck</b> <i>Redunca redunca</i> One in Murchison Falls NP		X												
<b>Sudan Oribi</b> <i>Ourebia (ourebia) montana</i> Very common in Murchison Falls NP	X	X												
<b>Bush Duiker</b> <i>Sylvicapra grimmia</i> One at Rwakobo Rock Lodge, Lake Mburo NP													X	
<b>Black-fronted Duiker</b> <i>Cephalophus nigrifrons kivuensis</i> One came hurtling down the path in Bwindi Impenetrable Forest NP before disappearing into the forest										X				
<b>Uganda Topi</b> <i>Damaliscus (lunatus) ugandae</i> Lake Mburo NP												X		
<b>Lelwel (Hartebeest)</b> <i>Alcephalus (busephalus) lelwel</i> Murchison Falls NP		X												
<b>Eland</b> <i>Taurotragus oryx</i> Lake Mburo NP												X		
<b>Nile Bushbuck &amp; Cape Bushbuck</b> <i>Tragelaphus (scriptus) bor &amp; Tragelaphus (scriptus) sylvaticus</i> HMW's Nile Bushbuck seen in Murchison NP, Kibale NP and QENP, with Cape Bushbuck at Lake Mburo NP and (perhaps this form?) at Ziwa Rhino Sanctuary. To my eyes, they all looked pretty identical.	X	X			X			X			X	X	X	
<b>Lake Chad Buffalo</b> <i>Syncerus brachyceros</i> Murchison Falls NP (13 <sup>th</sup> ) and QENP.		X				X	X	X						
<b>Cape Buffalo</b> <i>Syncerus caffer</i> Lake Mburo NP												X		

**Philip Precey, Wildlife Travel**  
www.wildlife-travel.co.uk



Above: Lelwel and Uganda Kob





Top: Sudan Oribe and Eastern Bohor Reedbuck; Middle: Cape Buffalo (left) and Lake Chad Buffalo (right); Bottom: Nile Bushbuck (left) and Cape Bushbuck (right)