






# Pangolins & Other Mammals of Ghana

**Destination:** Central, North & South-east Ghana

**Season:** Jan - Apr

-  Expert local guides & world class mammalwatching expert tour leaders throughout
-  Spotlighting in many of Ghana's forests searching for 2 species of Pangolins
-  Visit the best places for pangolins, Pel's Anomalure, Gambian Mongoose & more
-  Special post tour extension to find the newly described Benin Tree Hyrax
-  Special visit to a Yellow-headed Picathartes roost site – one of Africa's top birds

## **Dates:**

Group tour: 3<sup>rd</sup> March – 15<sup>th</sup> March 2025

Extension: 15<sup>th</sup> March – 18<sup>th</sup> March 2025

## **Private / Tailored Tour information:**

This tour can be booked anytime between of the year, however the wet season can make the terrain very muddy and some of the roads to access some of the remote forest locations may be difficult or impossible to travel along. In general the best season is from November – April with January - March being the best period.

Whilst we have a good success rate in filling tours some people prefer to book a private tour to avoid any disappointment and guarantee the departure. The logistics involved in visiting West Africa mean the trips can be expensive and the need for a small team of people to operate the lodge and excursions into the park and make sure that there are not other people around during the same time means that private tours can be prohibitively expensive.

We can run this tour with any number of people (up to a maximum of 8 people), the price advertised here is for a group of 4 people, for lower numbers the per person price does increase.

We also have flexibility for the duration of trip you would like to book – if booking a private tour.

We are also offering an optional post-tour extension to this trip which will go east of the Volta River and try and find the recently described Benin Tree Hyrax, meaning that if you booked both of these trips you may be lucky enough to see two species of pangolin and two species of tree hyrax in Ghana....along with many other incredible species.

## **Prices (2025 season):**

Group Tour (12 nights)

£3,995 per person

\*single supplement £150

Group Size is 4-8

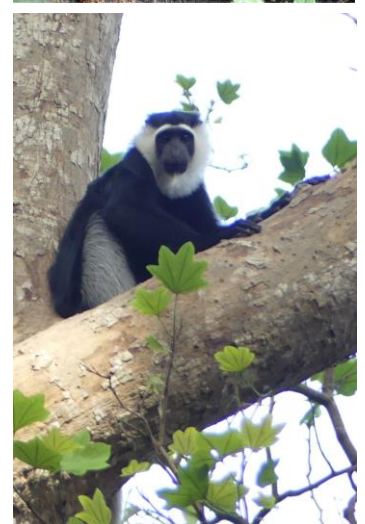
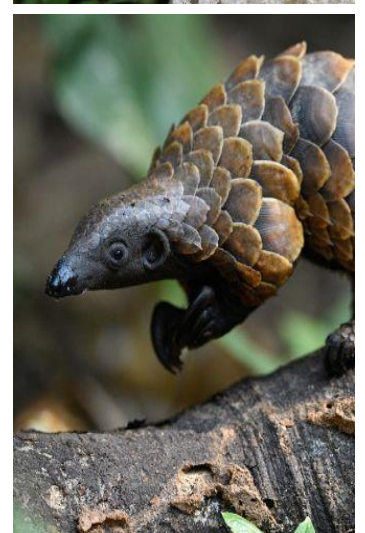
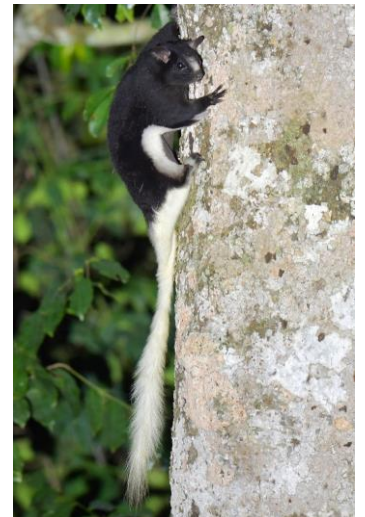
Extension (3 nights)

£750 per person

\*single supplement £50

## **Overview**

- Day 1:** Accra
- Days 2-3:** Shai Hills & Atewa Reserve
- Day 4:** Boabeng Fiema
- Days 5-7:** Mole National Park
- Day 8:** Kumasi
- Day 9:** Bobiri Reserve & Picathartes Forest
- Days 10-12:** Kakum National Park
- Day 13:** Accra  
<<Extension>>
- Days 14-15:** Amedozfe - Kalakpa
- Days 16:** Accra





# Tour Information

## Introduction

Ghana is an economic powerhouse in West Africa, with a thriving modern city in Accra and beautiful coastline the country has to a lot to offer for the international visitor, but it also has some of the last remaining tracts of rainforest and savanna in West Africa. National Parks such as Kakum and Mole are home to populations of lions, forest & savanna elephant, bongo and other large mammals which have been extirpated from many neighbouring countries. Whilst seeing some of the large mammals is very tough in Ghana there are some smaller species which have started to make this wonderful country quite famous.

Home to three species of pangolins, two species of tree hyrax, four species of anomalure (African flying squirrel) as well as a wealth of primates, diurnal squirrels and small carnivores the country offers a bounty for any mammalwatching enthusiast.

This trip is designed for the best mammalwatching the country has to offer and we have secured the services of the pangolin finding expert Robert Nkator and his team as well as providing top class mammalwatching tour leaders of international fame, we are confident of finding as many of these wonderful species as possible as we explore Ghana.

The trip visits a combination of primary and secondary rainforest and savanna as we target both of the smaller species of pangolin (we have a 75% success rate in seeing both of these species and around 90% in seeing one of the two species), which are the white-bellied (or tree) pangolin and the black-bellied (or long-tailed) pangolin. We also visit various forest which are perhaps the only (or certainly the most reliable) locations for species such as Pel's anomalure, white-thighed colobus, Gambian mongoose among other species.

And for anyone interested in extending their trip by a couple of extra nights we have an exciting and unique extension which will take you east of the Volta River (a major barrier in species movements in West Africa) where we will try to find the recently described Benin Tree Hyrax.

So if pangolins are on your list of mammals to see, this trip is for you, there is nowhere like Ghana for trying to see one of these amazing animals and it is not just the mammals as we will also be visiting a roosting site for one of Africa's top birds, the beautiful yellow-headed picathartes.

Below is our itinerary, for further information, photographs and booking information please contact us further.

## Itinerary

---

### Day 1 **Accra**

### *Arrival & Rest*

**Accommodation:**

Malbert Inn

**Food:**

No meals will be included today.

**Transportation:**

Private vehicle.

Today (we recommend everyone arrives on the KLM flight) you will be met on your arrival in Accra by your guide and driver and driven to your accommodation on the edge of the city (~45 mins). So we can get to Shai Hills easily the following morning.

---

### Day 2 **Shai Hills National Park / Atewa**

### *Wildlife Watching & Travelling*

**Accommodation:**

Royal Bleumich Hotel

**Food:**

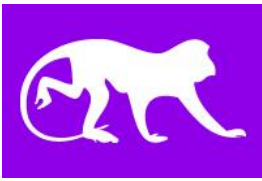
All meals included and served at the accommodation in between transfers and wildlife watching.

**Transportation:**

Private vehicle & Walking.

This morning will be an early start for breakfast and then leaving for the nearby national park of Shai Hills. You will spend the morning here looking for various species such as Buffon's kob, green monkeys (however here they appear to be a hybrid of tantalus and green monkeys), lesser spot-nosed monkeys, red-legged sun squirrels as well as visiting a bat cave where a large colony of Egyptian tomb bats live.

After leaving here we will have lunch and depart for Atewa (~3 hours), this is a quite degraded forested ridge line and we will hike along the road through the middle of the forest in the evening / night. Despite being largely secondary forest there is a very good chance to see species such as Demidoff's galago, western tree hyrax and West African potto after dark and Gambian sun squirrel and various other squirrels in the mornings. This is the first time we will also be looking for pangolins, and you will see Robert painstakingly checking every tangle of vines as we searches nearby tree tirelessly for these amazing animals.



---

### Day 3 **Atewa**

### *Wildlife Watching*

**Accommodation:**

Royal Bleumich Hotel

**Food:**

All meals included and served at the accommodation in between transfers and wildlife watching.

**Transportation:**

Private vehicle & Walking.

This morning will be spent with a morning and afternoon / night visit to Atewa where we will try and find as many mammals and other wildlife as possible.

---

### Day 4 **Atewa / Boabeng Fiema**

### *Travelling*

**Accommodation:**

Encom Hotel

**Food:**

All meals included and served at the accommodation in between transfers and wildlife watching.

**Transportation:**

Private vehicle.

This morning we will leave the hotel after breakfast and drive to Boabeng Fiema Monkey Sanctuary (~6 hours) and have lunch on arrival at the hotel in a town around 1 hour from the sanctuary. The afternoon is free to rest as we will visit the sanctuary tomorrow.

---

### Day 5 **Boabeng Fiema Sanctuary**

### *Wildlife Watching & Travelling*

**Accommodation:**

Mole Motel

**Food:**

All meals included and served at the accommodation in between transfers and wildlife watching.

**Transportation:**

Private vehicle & Walking.

This morning after breakfast we will visit Boabeng Fiema Monkey Sanctuary, this is a protected area of forest which has been run and controlled by a local family since the 1970's, the founder started to protect the forest as a way of protecting the home of the white-thighed colobus here. He has managed to do such a good job that the numbers of both the white-thighed colobus and Low's mona monkey have quadrupled and there are other species (such as common cusimanse and Maxwell's duiker) which are doing very well here also.

Whilst here you will both of the primates without much difficulty and if you wish you can get up close a personal with some of the Low's mona monkeys as one troop are very friendly and will come along and jump on you for the price of a piece of banana. It is a good example of a local community working sustainably to help protect a species and their habitat to the benefit of everyone.

From here we will continue the journey north and to one of the largest areas of West Africa savanna in Mole National Park (~6 hours).

We will enter the park for the first time tomorrow.

---

### Days 6-7 **Mole National Park**

### *Wildlife Watching*

**Accommodation:**

Mole Motel

**Food:**

All meals included and served at the accommodation in between transfers and wildlife watching.

**Transportation:**

Private vehicle.

Over the course of these two days you will enter the park in the morning and afternoon looking for wildlife. The park is a very good place to see the Sahelian endemic red-flanked duiker as well as tree green monkeys (no hybridising here), patas monkeys, Kitambo rope squirrel and Gambian mongoose as well as many other more typical African savanna species such as African bush elephants, roan antelope, common warthog, waterbuck, bushbuck, kob, olive baboon and striped ground squirrel (among others).

We will also head out after dark around here and try and find some nocturnal species which could include northern lesser galago, white-tailed mongoose and pardine genet.

All together Mole National Park is a great place to visit and along with the morning visit to Shai Hills National Park at the start of the trip, provides some rest bite from tropical rainforests and as a result we will see many more species which cannot be seen in the forests.



---

## Day 8 Mole / Kumasi

### Travelling

**Accommodation:**

Royal Basin  
Resort

**Food:**

All meals included and served at the accommodation  
in between transfers and wildlife watching.

**Transportation:**

Private vehicle.

Today is a full day of travelling as we head back south from Mole National Park to the city of Kumasi (~9 hours) and overnight here before heading further south again tomorrow.

---

## Day 9 Bobiri Forest & Picathartes Forest Travelling & Wildlife Watching

**Accommodation:**

Hotel 734

**Food:**

All meals included and served at the accommodation  
in between transfers and wildlife watching.

**Transportation:**

Private vehicle &  
Walking.

Early this morning we will leave the city and head to Bobiri Butterfly Sanctuary, this is a large area of primary forest which as the name suggests is set up to protect and study butterflies but as a result many other species are also protected here. And we will spend the morning looking for various animals, including pangolins with a walk along some of the trails here.

From here we will have lunch and head to a small village (~3 hours) which has become a top birding destination in West Africa in the last few years. It is here that a small number of yellow-headed picathartes were rediscovered after 50 years of obscurity.

We will enter the forest in the late afternoon to make it to their roost site (a large exposed rock in the forest) for when they come back to their nest for the night. This forest is also a very good place to try and find white-bellied pangolin and after dark we will head back into the forest with local trackers and try and find one of these amazing animals.

---

## Day 11 Picathartes Forest / Kakum NP Wildlife Watching & Travelling

**Accommodation:**

Hans Cottage  
Boatel

**Food:**

All meals included and served at the accommodation  
in between transfers and wildlife watching.

**Transportation:**

Private vehicle &  
Walking.

This morning we will come back to the Picathartes forest for another chance for pangolin and other mammals in the morning before leaving and heading to Kakum National Park (~3 hours).

After we arrive and check into the famous Hans Cottage Boatel we will head to the park for the afternoon / evening. This is the best place to try and see black-bellied pangolin and Pel's anomalure (among other species) and we will visit the canopy walkway and hike the various trails looking for a variety of species. There is a family of Pel's anomalures which live in a silk-cotton tree near the canopy walk and we usually see them coming out of here in the evenings and this will be factored in whilst here.

---

## Days 12-13 Kakum National Park

### Wildlife Watching

**Accommodation:**

Hans Cottage  
Boatel

**Food:**

All meals included and served at the accommodation  
in between transfers and wildlife watching.

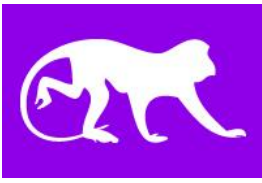
**Transportation:**

Private vehicle &  
Walking.

Over these two days we will visit Kakum National Park in the morning and afternoon and our primary focus is the black-bellied pangolin and Robert will be searching hard for this species as well as others, such as Gambian pouched rats, various primates and squirrel species.

Kakum is one of the most popular parks in the country and so we will be coming in early and staying late to avoid the crowds, luckily Robert has great contacts here and we can get in and out after the park is officially open / closed.





---

**Day 13 Accra****Travelling****Accommodation:**

NA / (unless booking the extension)

**Food:**

Breakfast is the only meal included today for the main trip – dinner is also included for people booking the extension.

**Transportation:**

Private vehicle.

Today you will have a more leisurely breakfast at Hans Cottage before packing up and leaving to head back towards the capital (~5-6 hours). For people leaving today (at the end of the main tour) we will drop you at the airport we recommend booking flights later than 5pm today.

For people who have also booked the extension, you will be transferred to a hotel in the city for the night.

---

**Optional Post Tour Extension**

---

**Day 14 Accra-Home / Amedozfe / Kalakpa Travelling & Wildlife Watching****Accommodation:**

Private vehicle & Walking.

**Food:**

Private vehicle & Walking.

**Transportation:**

Private vehicle & Walking.

This morning after breakfast you will leave the city and head north-east and over the Volta towards the village of Amedozfe (which is the highest (in altitude) settlement in West Africa (~4 hours).

We will settle in and then in the late afternoon head into the forest to look for a very special species, the Benin tree hyrax. This species was only discovered and described (based on differences in their calls to the western tree hyrax) in 2022. Whilst looking for this species we will also have a decent chance for Beecroft's anomalure, Gambian pouched rats and Thomas's galago.

---

**Day 15 Amedozfe – Tafi Atome Sanctuary****Wildlife Watching****Accommodation:**

Private vehicle & Walking.

**Food:**

Private vehicle & Walking.

**Transportation:**

Private vehicle & Walking.

This morning we will make a visit to the nearby Tafi Atome Sanctuary which is home to true mona monkeys (there are Low's mona monkeys west of the Volta (that we will have seen in Boabeng Fiema) and other 'mona' monkeys in West, Central and East Africa. But from here east to the Cross River are the 'original' Mona monkeys. The experience is a little like Boabeng, with troops of wild monkeys being very used to humans and fed some bananas each day.

Then in the evening we will head out into the forests again to try again for the Benin tree hyrax and other nocturnal species.

---

**Day 16 Accra - Home****Travelling & Departure****Accommodation:**

NA

**Food:**

Breakfast will be at the hotel and no other meals will be served today.

**Transportation:**

Private vehicle & International flight.

Today we will have a breakfast and then leave to head back to the city of Accra (~4 hours) and be dropped at the airport. We recommend booking flights after 4pm for today.



### **Your tour and all Royle Safaris services end upon transfer to the airport**

Please note that the itinerary stated above is correct as our planned intentions for the tour. However adverse weather conditions and other local considerations can necessitate some modifications of the itinerary during the course of the tour; any changes will be made to make the best of the time, weather conditions and other constraints forced upon us and all changes will be made in conjunction with our terms and conditions.

### **Tour Inclusions**

Absolutely everything mentioned in the above itinerary is included (except where it is expressly mentioned as an optional extra).

- All accommodation as mentioned above or of a similar standard as mentioned.
- All meals as mentioned in the itinerary.
- Bottled mineral or purified (boiled) water will be provided throughout and on request.
- Private vehicles for all transfers and safari drives.
- Mammalwatching expert tour leader (of international renown).
- English speaking local drivers and guide with years of experience in working in the areas we are travelling.
- Expert local pangolin finding guide.
- All fuel, tolls, taxes and other expenses relating to driving.
- All wildlife watching activities such as hikes, boat trips and night safaris and stake outs as mentioned in the itinerary.
- A selection of field guides of the local areas will be available on request from the tour leader.
- Also documentaries about the local area are sometimes available (depending on the electricity usage in the areas we are camping).
- Entrance fees and permits needed.

### **Tour Exclusions**

Nearly everything you will need is included in the price you have already paid for the tour.

- International flights to and from the tour start and end points.
- Travel insurance including any fees that result from emergency medical or evacuation needs.
- Visa fees for entering the country(s).
- Vaccinations and any medication are not included – including any covid tests which may be needed.
- Any food other than the meals provided and mentioned in the above itinerary.
- Any drinks not including in the meal.
- Any items of a personal nature are not included, such as souvenirs, medication, toiletries, laundry and phone calls.
- Tips are also not included.
- If any internal flights are cancelled on this trip (should any be included in the itinerary); due to unforeseen and uncontrollable circumstances then any extra costs incurred such as hotels, food and transfers are extra.
- Any departure taxes which may be due when leaving are not included (but may be included in the cost of your flights).

**Please refer to our Terms & Conditions (<http://www.royle-safaris.co.uk/terms-conditions/>) before booking any trips – email or paper copies of Terms & Conditions can be provided if needed**