



# MAMMAL WATCHING

*Adventure with IStopBorneo Wildlife*





Binturong



Western Tarsier



Red Leaf Monkey



Bornean Elephant



Sunda Clouded Leopard



Sunda Pangolin

# MAMMAL WATCHING

WITH 1STOPBORNEO WILDLIFE

## PACKAGE 1

13 Days 12 Nights

£ 4700

6 pax only

## DESTINATIONS

SABAH:

Kinabalu Park, Deramakot,

Kinabatangan, Tabin, Tawau Hills

DAY  
1-2

### KINABALU PARK

- Pick up from Kota Kinabalu International Airport or City
- 2.5 hours of drive to Kinabalu Park HQ
- Top destination in Borneo for high montane endemic species.
- Walks will be done along the mountain roads and trails.
- Target species: Whitehead's Pygmy Squirrel, Mountain Treeshrew, Banded Linsang, and lots of endemic montane birds and frogs.

DAY  
3-6

### DERAMAKOT

- 3-4 hours drive from Kinabalu Park
- The most renowned place for hardcore mammal safari.
- Daily safari drives are done on the forest roads during the day and night.
- Target species: Clouded Leopard, Thomas Flying Squirrel, Slow Loris, Yellow-throated Marten, Orangutan.

DAY  
7-8

### KINABATANGAN

- 5 hours drive from Deramakot
- The longest river in Sabah with rich riverine forest.
- Daily boat cruises along the river during the day and night.
- Target species: Proboscis Monkey, Silver Langur, Borneo Elephant, Flat-headed Cat, and many waterbirds.

DAY  
9-10

### TABIN

- 3 hours drive from Kinabatangan
- A riverside wildlife resort located at the forest edge which used to have the last Sumatran Rhinoceros.
- A mixture of safari drives and forest walks are done daily.
- Target species: Malay Civet, Banded Civet, Sun Bear, Leopard Cat, Binturong, North Borneo Gibbons, Orangutan.

DAY  
11-13

### TAWAU HILLS

- 3.5 hours drive from Tabin
- Home to the tallest tropical trees enriched with volcanic soil.
- Walks are done during the day and night in the forest trails.
- Target species: Red Leaf Monkeys, Greater Mousedeer, Colugo, North Borneo Gibbons, Low's Ground Squirrel, and lots of giant insects.

# MAMMAL WATCHING

WITH 1STOPBORNEO WILDLIFE

## PACKAGE 2

11 Days 10 Nights

£ 3400

6 pax Only

## DESTINATIONS

SABAH:

Deramakot, Kinabatangan,

Tawau Hills, Inikea

DAY  
1-4

### DERAMAKOT

- Pick up from Sandakan Airport or Town
- 4.5 hours drive from Sandakan.
- The most renowned place for hardcore mammal safari.
- Daily safari drives are done on the forest roads during the day and night.
- Target species: Clouded Leopard, Thomas Flying Squirrel, Slow Loris, Yellow-throated Marten, Orangutan.

DAY  
5-6

### KINABATANGAN

- 5 hours drive from Deramakot.
- The longest river in Sabah with rich riverine forest.
- Daily boat cruises along the river during the day and night.
- Target species: Proboscis Monkey, Silver Langur, Borneo Elephant, Flat-headed Cat, and many waterbirds.

DAY  
7-8

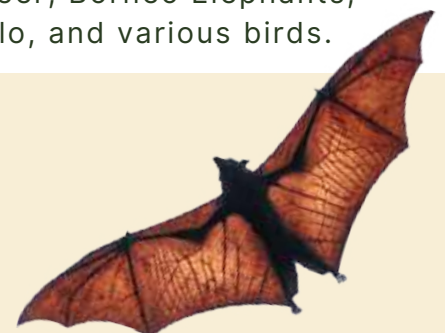
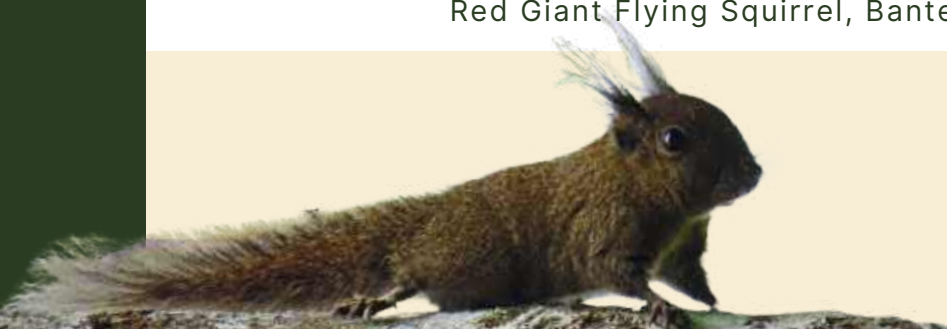
### TAWAU HILLS

- 4.5 hours drive from Kinabatangan.
- Home to the tallest tropical trees enriched with volcanic soil.
- Walks are done during the day and night in the forest trails.
- Target species: Red Leaf Monkeys, Greater Mousedeer, Colugo, North Borneo Gibbons, Low's Ground Squirrel, and lots of giant insects.

DAY  
9-11

### INIKEA

- 3 hours drive from Tawau Hills.
- Remote reforestation site where wildlife successfully returned.
- Safari rides are done day and night on the old logging road.
- Target species: Red Muntjac, Sambar Deer, Borneo Elephants, Red Giant Flying Squirrel, Banteng Buffalo, and various birds.



# PACKAGES INCLUDE:

- Guided walks and other included activities
- Trip leader with local ecologist and ranger guides
- Main meals - basic local style
- Basic accommodation with private rooms in most places
- Transportation between destinations except flights
- Self-purchase for flights (but can be included with add-on charges)
- Entrance & conservation fees
- Facility use with availability (kitchen, library, etc.)

## WHY WITH US?

- We are a local conservation group.
- We have 3 active reforestation sites
- We have a 24H rescue service for pangolins and snakes.
- Borneo wildlife ambassador programme is one of our iconic education initiatives

*Ready to start your trip with us?*





# MAMMALS

## Best Sighting Spot

1StopBorneo Wildlife

### SABAH

---

KINABALU PARK

DERAMAKOT FOREST RESERVE

RAINFOREST DISCOVERY CENTRE

KINABATANGAN RIVER

DANUM VALLEY CONSERVATION CENTRE

TABIN WILDLIFE CENTRE

MALIAU BASIN

INIKEA

TAWAU

---

### SARAWAK

TANJUNG DATU NATIONAL PARK

---

### BRUNEI

LABI ROAD

KUALA BALAI

BRUNEI BAY

**MAMMAL-WATCHING TRIP  
LEADERS ON BORNEO**

• SHAVEZ: +6012-8248052



A POCKET GUIDE TO  
**MAMMALS OF BORNEO**

SHAVEZ CHEEMA



**COMPREHENSIVE POCKET GUIDE TO MAMMALS OF BORNEO**

**MAMMALS WATCHING CHECKLIST WITH A TICK BOX**



**GRAB NOW**



1StopBorneo Wildlife

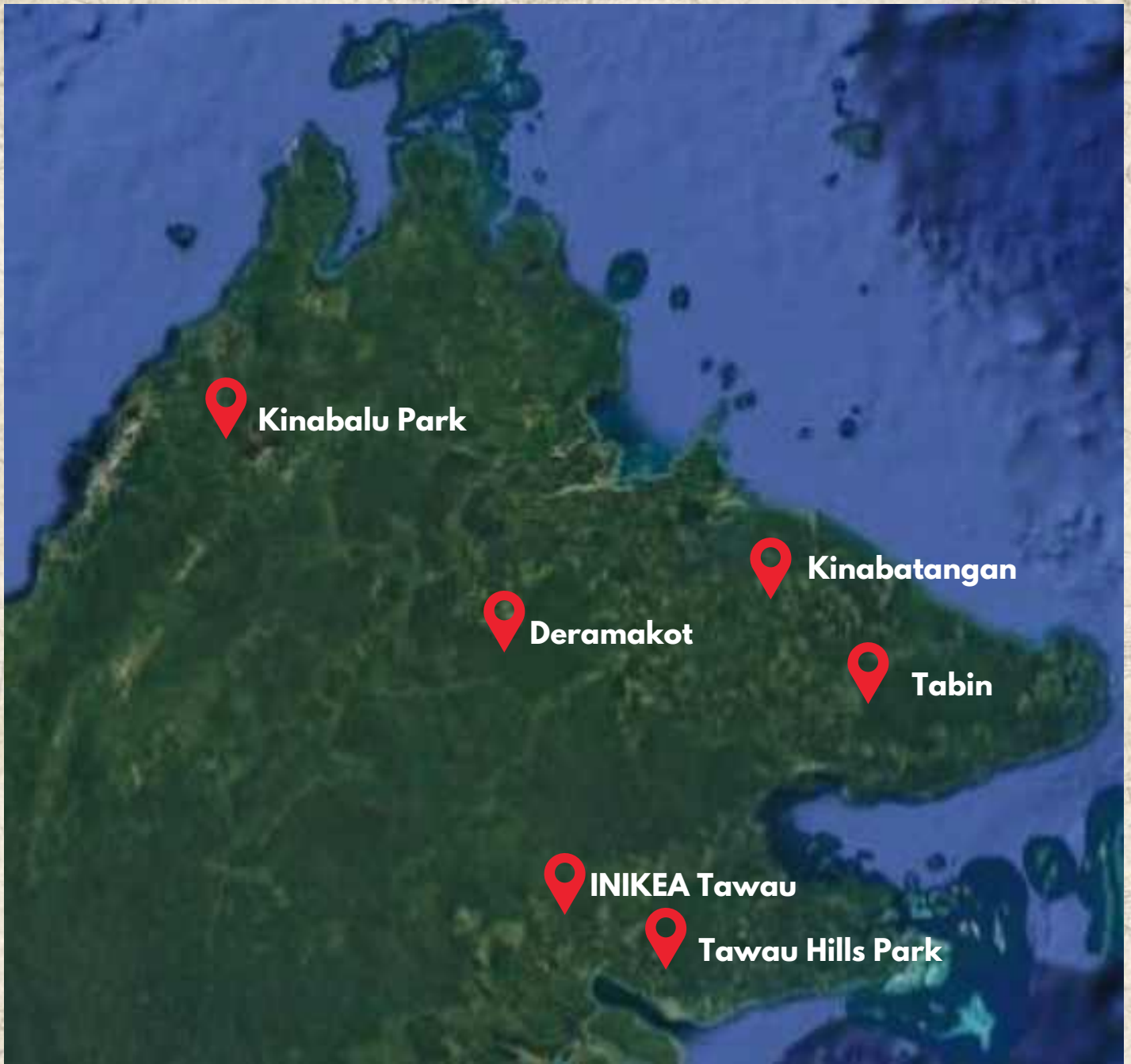


1stopborneo@gmail.com



+6012-8248052

# DESTINATIONS MAP



**Kinabalu Park**

**Kinabatangan**

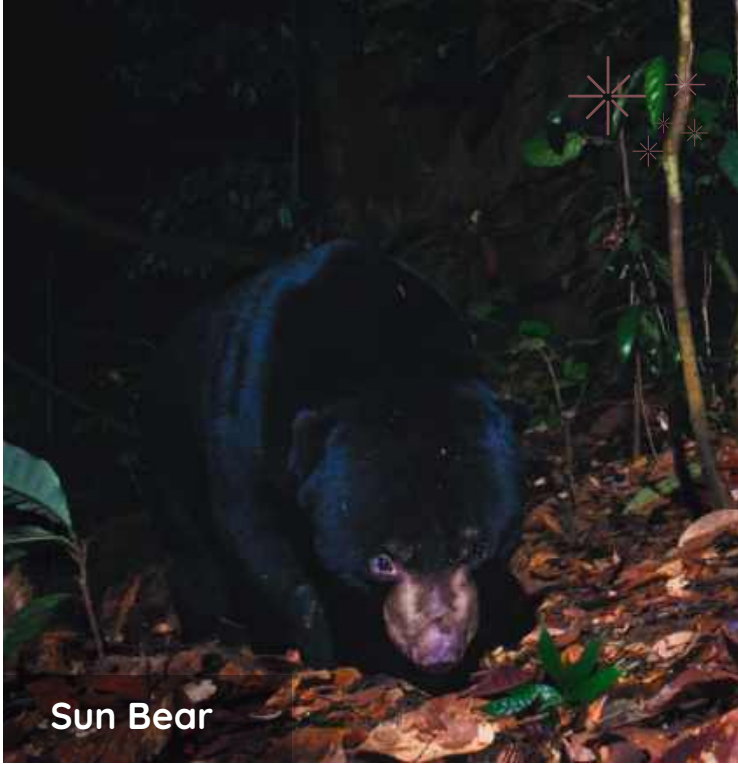
**Deramakot**

**Tabin**

**INIKEA Tawau**

**Tawau Hills Park**

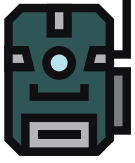




Sun Bear

1StopBorneo Wildlife

# CAMERA TRAPPING



Usually you need to permit to do camera trapping.

But ask your local ranger and guide if it is ok to put it in the area of your visit.

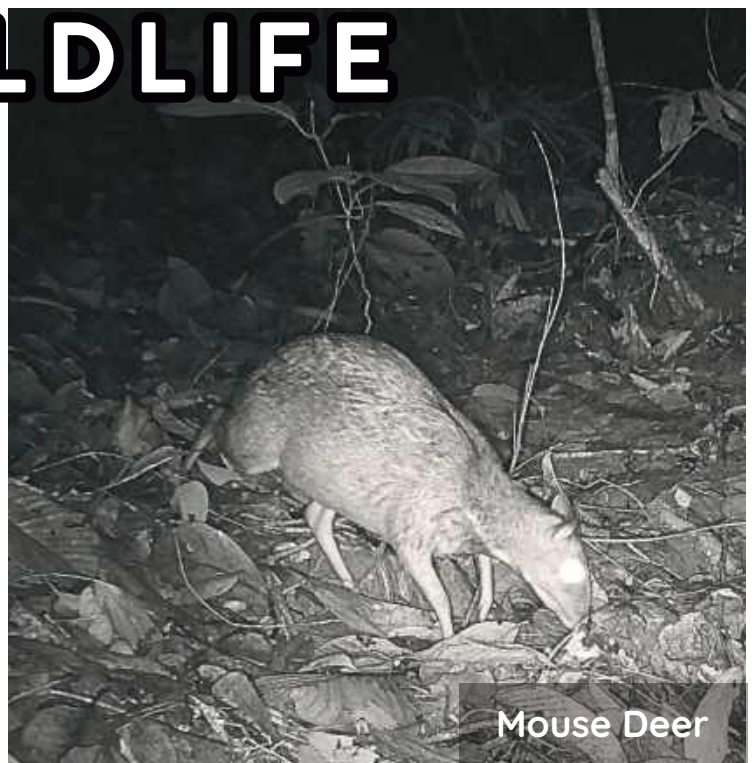


Malay Civet

## A FUN WAY TO LOOK AT WILDLIFE



Muntjacs



Mouse Deer

# THE 'RAREST' MAMMALS OF BORNEO

Mammals covered here are species that are very difficult to record in the wild. Even serious mammal watchers and field scientists acknowledge the challenge of seeing and photographing them. Mostly, their presence has been confirmed by camera trapping, anecdotal evidence or unexpected, chance encounters. It is reasonable to explain these limited records by the fact these species exist only in small populations, in other words they are rare. In conservation terms, they might be considered to be at risk but not necessarily endangered.

## Kinabalu Ferret Badger (*Melogale everetti*)

Also known as the Bornean Ferret Badger, it is largely confined to hill and montane cloud forest of Mount Kinabalu. There are also limited records from other areas, such as recent camera trap records in similar habitat within the Crocker Range Park. This is a nocturnal mammal and is difficult to observe within its known range.



## Tufted Ground Squirrel (*Rheithrosciurus macrotis*)

Described as one of the most magnificent looking squirrels in the world. It is largely confined to hill forest throughout Borneo, with well documented sightings from each of Sabah, Brunei, Sarawak and Kalimantan. It is captured quite regularly in camera traps but is rarely seen in the field, even by experienced mammal watchers. There are no confirmed dense populations in Borneo and it is likely to be scarce but widely distributed.

## Hose's Civet (*Hemigalus hosei*)

This elusive civet is largely confined to montane habitat of many of the northern mountain ranges of Borneo; Phillipps indicates that Hose's Civet replaces the Banded Civet at altitudes above 1,200m in such habitat. One of the reasons why it is rarely looked for is that wildlife watchers are less likely to visit mountains that are often regarded as inaccessible.



Scan QR code to read more.....



Bay Cat (Ca

