



Clouded Leopard Expedition


Destination: Lantang District, Nepal

Season: All Year Around

 Have the expert guidance of the Clouded Leopard king Mike Gordon (from Sabah)

 Explore the forested hills of this little visited, wildlife rich region of Nepal

 Nocturnal activities and diurnal searches for Clouded Leopards & other species

 Expedition style tour as you go in search of the elusive Clouded Leopard

 Chances for many other rare species of mammals in the Himalayan foothills

Dates:

Next Group tour: 9th Mar – 18th Mar 2022

Private / Tailored Tour information:

This tour can be booked anytime of the year, however we recommend avoiding the height of winter. And we think that spring and autumn are the best seasons to visit. This would be from late February – May and then September – mid November.

The group tour is run annually (with the possibility of adding more group tour dates for multiple trips per year), however you can book private tours for any number of people you wish (up to 8) and we can provide prices for private groups up to 1-8 on request.

We also have flexibility for the duration of trip you would like to book, if people wish to extend or shorten the trip – however we would not recommend decreasing the length of the tour.

Some of our clients prefer to book longer trips to also include Chitwan or other locations in Nepal. There are many other wonderful things to see and do in Nepal and we have a range of Nepalese holidays, including red panda tours and many mountain hikes, cultural activities and adventure activities such as white-water rafting.

Trips for any group size and any duration are possible, please enquire further for more information on our tailored Nepal wildlife tours.

For our tailored tours of longer durations or including other activities please contact us and we will prepare a tailored itinerary and quote for you at the soonest.

We are experts in organising private tailor made tours anywhere in the world for wildlife watching holidays.

Prices (2022 season):

Group Tour (9 nights)

£2,690 per person

*single supplement £110

Overview

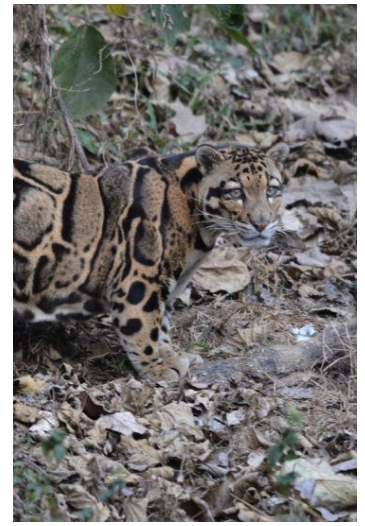
Day 1: Kathmandu

Day 2: Langtang Village

Days 3-8: Langtang Forest

Day 9: Kathmandu

Day 10: Home





Tour Information

Introduction

For a very long time clouded leopards were among the top of every wildlife enthusiasts wish lists (which has not changed), but for a long time the chances of seeing one were lottery like odds. Very few people were ever lucky enough to happen chance across one as they trekked in various forests around South and South East Asia. All of that changed around 5 years ago when a wonderful forestry department opened its up for tourism in Sabah, Malaysia (Deramakot Forest Reserve) and the rate of seeing this wonderful species shot up drastically. But nearly at the same time as this location arrived on the wildlife watching scene the clouded leopard was split into two different species; the Indochinese clouded leopard (native to the mainland of Asia) and the Sunda clouded leopard (found on Sumatra and Borneo). So whilst seeing the Sunda clouded leopard is now possible (although still with some luck and the right guides), there remained nowhere to see the Indochinese clouded leopard – well that was until very recently.

Due to some very adventurous solo travellers and the incredible work of clouded leopard researchers various parks and forests in the north-east of India and along the Himalayan foothills of Nepal have been extensively studied and tracked with views of finding clouded leopard populations and possibly getting a sighting. The breakthrough came in late 2018 and since then Royle Safaris has been working hard with the best clouded leopard researchers in Nepal to pioneer the first ever group tour to try and find this species. We have also hired the serviced of Mike Gordon, the dedicated and passionate wildlife spotter and guide from Sabah, made famous for his numerous sightings of Sunda clouded leopards. Possibly no one in the world understands this species better than Mike and we are delighted that he will be guiding our new Clouded Leopard Expeditions to Nepal.

But there are other advantages of travelling to this region of Nepal to look for this species of clouded leopard, not just that it is a different species from the Bornean ones, but also that Nepal offers a brand new wildlife experience and also the price is cheaper and a whole new set of species can be seen in these forests too.

So why not branch out and away from Sabah, Borneo and cast the clouded leopard net wider. This tour is unique and offers the chance to explore a wonderful forest which is seldom visited and little understood. But in recent times this area has become a hotbed for clouded leopard sightings.

At Royle Safaris we do our best to pioneer as many new trips as possible, to try and get people out to the newest and best wildlife watching destinations ahead of the larger companies and the bigger groups. This is the latest in a long list of pioneering mammal watching tours from Royle Safaris and it will not be the last.

So we hope you decide to book on this unique big cat watching tour, dedicated to the Indochinese clouded leopard, however if you wish to know more about the Sunda clouded leopard we also offer a rare mammals tour of Borneo where the Sunda clouded leopard is a top targeted species. Just contact us for more information or our brochure.

Itinerary

Day 1 **Kathmandu**

Arrival & Sightseeing

Accommodation:

Ambassador
Garden Hotel (3*)

Food:

No meals included today.

Transportation:

Private vehicle.

On arrival at Tribhuvan International Airport you will be met by your tour guide and our local guide/driver. From the airport we will be transferred in our private vehicle into the middle of Kathmandu (20-30 mins). Once here we will head to the Thamel district and your hotel for the night. If there is time you will be taken around the winding streets of Thamel. This area is the heartbeat of Kathmandu and a place which teems with colour, sights and sounds. You can easily get lost meandering down the maze of streets souvenir shopping and we can spend hours here enjoying the hustle and bustle of Nepal's busiest city. Whilst still very touristy Thamel is a good welcome to Nepal and in particular Kathmandu. If time allows we will have a short city tour today, however it depends on the arrival times of all of the clients booked on the trip. However Thamel is safe to walk around and with a large selection of restaurants your guide can point you in the right direction for your evening meal, alternatively you can rest and prepare for the long car journey tomorrow morning to get to Lantang district.

Depending on the time we arrive back into Kathmandu on the final day of the trip we will look to conduct some sightseeing around the city and show you some of the better known sites such as Boudnath Stupa, which is the largest Buddhist stupa in the world and a very important place for Nepalese Buddhists. We will then visit the hilltop temples at Swayambunath that are dedicated to Hanuman the monkey god n Hindu mythology; alongside the



playful macaques the views over Kathmandu are worth the long climb up alone. We then visit the historical Royal palaces and temples of the bustling Durbur Square.

Day 2 **Kathmandu – Langtang District** *Travelling & Wildlife Watching*

Accommodation:

Camping or Local Guest House

Food:

Breakfast will be served at the hotel in Kathmandu and then lunch and dinner at the camp or guest house.

Transportation:

Private vehicle & Walking.

This morning you will be collected from the hotel after breakfast and transported around 3 hours north towards the Langtang district of Nepal in our own vehicle.

On arrival we will either set up the camp or check into the local guest house (depending on what is recommended by the local guide (based on clouded leopard sightings)) we will head out into the forest with the local ranger and Mike to try and locate some wildlife, including clouded leopards.

We can also go out after dark looking, however many of the sightings are made during the day, so we will focus during the day, but also there will be some spotlighting offered each night.

Days 3-8 **Langtang District** *Wildlife Watching*

Accommodation:

Camping or Local Guest House

Food:

All your meals will be served in the camp or guest house in between wildlife watching activities.

Transportation:

Walking.

Over the next 6 full days you will explore the forest both during the day and some night time activities looking for as much wildlife as we can find, with the target of course being the wonderful and elusive Indochinese clouded leopard. There is not much known about the movements of clouded leopards here, and we will be helped by the local rangers as well as information from local researchers and of course the expertise of Mike Gordon based on his years guiding in Sabah and focusing heavily on clouded leopards. So we will spend a lot of time walking the trails, scanning slopes and also waiting patiently in certain areas for animals to come to us or walk across the trails.

Other species which could be seen from here include red pandas, Himalayan musk deer, Himalayan tahr, Assamese macaque, Nepali gray langur which make up the 46 species strong mammal list (however this is likely to miss some of the rodents, shrews and bats that also inhabit the region (there have to been comprehensive censuses here)).

There is no fixed pattern to the days here and so there is not much else to put in the daily description, our main aim whilst here for these 6 full days is to try and see a Indochinese clouded leopard and of course other wildlife and so we will take our queues from the local rangers, researchers, recent movements and sightings as well as the local conditions of the forest when we are there.

We will either be staying in a local guest house nearby to the forest or camping on the edge of the forest, again our final decision will be based on what is best for chances of seeing clouded leopards when we are there.

Day 9 **Kathmandu** *Wildlife Watching & Travelling*

Accommodation:

Ambassador Garden Hotel (3* Hotel)

Food:

You will have breakfast in the camp or guest house with no other meals included today.

Transportation:

Private vehicle & Walking.

This morning is your last opportunity to explore the forests here looking for wildlife, before we depart and leave in our private vehicle and head back to Kathmandu.

On arrival back in the city you will be taken to the same accommodation as on the first day here and if we arrive in time and you would like we can look to do some sightseeing if you wish, such as visiting Boudnath Stupa, Swayambunath and Durbar Square; however the time of arrival into Kathmandu will dictate that and this sightseeing trip would be extra and arranged with the accommodation.



Day 11 **Home**

Departure

Accommodation:

NA

Food:

Breakfast at the hotel is the only meal included today.

Transportation:

Private vehicle & International flight.

This morning you will have a private transfer arranged for you to get you to the airport in order to catch your return flight home or onwards to your next destination.

Your tour and all Royle Safaris services end upon transfer to the airport

Please note that the itinerary stated above is correct as our planned intentions for the tour. However adverse weather conditions and other local considerations can necessitate some modifications of the itinerary during the course of the tour; any changes will be made to make the best of the time, weather conditions and other constraints forced upon us and all changes will be made in conjunction with our terms and conditions.

Tour Inclusions

Absolutely everything mentioned in the above itinerary is included (except where it is expressly mentioned as an optional extra).

- All accommodation as mentioned above or of a similar standard as mentioned (some camping may be required).
- All meals as mentioned in the itinerary; **please note that some lunches and dinners are not included in this itinerary (in Kathmandu).**
- Bottled mineral or purified (boiled) water will be provided throughout and on request.
- Private AC vehicle for all transfers.
- English speaking local driver with years of experience in working in the areas we are travelling.
- All fuel, tolls, taxes and other expenses relating to driving.
- Royle Safaris tour guide throughout your time in Chitwan (Mike Gordon).
- Forest permits and entrance fees for all excursions into the forest.
- Expertise from local clouded leopard researchers.
- Local rangers for all excursions into the forest.
- Half day sightseeing in Kathmandu.
- All camping equipment (excluding sleeping bag) if camping is required – camp cook also provided.

Tour Exclusions

Nearly everything you will need is included in the price you have already paid for the tour. However there are some things not included.

- International flights to and from the tour start and end points.
- Travel insurance including any fees that result from emergency medical or evacuation needs.
- Visa fees for entering the country(s).
- Vaccinations and any medication (such as anti-malarial tablets) are not included.
- Any food other than the meals provided and mentioned in the above itinerary; **please not that some lunches and dinners are not included in this itinerary (in Kathmandu).**
- Some meals will include a drink (such as juice, tea & coffee at breakfast) but most soft drinks and alcohol are an extra expense.
- Any items of a personal nature are not included, such as souvenirs, medication, toiletries, laundry and phone calls.
- Tips are also not included. There is no hard and fast rule for tipping in Nepal. However we would appreciate it, if you have been happy with the service of the guides and drivers then please tip a little something at the end of the safari. For local guides we hire for individual activities please tip individually and also if there are tip boxes in restaurants, camps, lodges and hotels then these are generally used for tipping all of the staff.
- Any departure taxes which may be due when leaving are not included (but may be included in the cost of your flights).
- Sleeping bags are needed – even if staying in the local guest house the insulation can be poor and temps cold.

Please refer to our Terms & Conditions (<http://www.royle-safaris.co.uk/terms-conditions/>) before booking any trips – email or paper copies of Terms & Conditions can be provided if needed