

Help with IDs from Uganda – A couple mongooses, a couple of genets, 2 mice s gerbil and a squirrel

Hi everyone,

So Alex Meyer and I have recently visited Uganda, where we saw some really cool and interesting species. But before I publish the report (which I have started), I would like to get everyone's help on identification of some mammals that still remain a question.

1. A mystery mongoose in Murchison Falls:





We saw this individual around 22:00-23:00 in Murchison Falls, north of the Nile, a few km from Pakuba lodge. The tail of it looks nothing like white-tailed mongoose, which generally has a long and (whitely) bushy tail. This one is short, slim, and lacking hair. Also, the posture is different than white-tailed's. White tailed mongoose is quite large for a mongoose with relatively tall legs. The overall feel is that it's not a white-tailed, but what could it be? Black-footed mongoose comes to mind because of the black legs, and the proximity to the known distribution range, but the description for black footed mongoose says its habitat is deep deciduous forests, which this was not. I guess it could be an old or sick white-tailed mongoose, but what happened to its tail?

2. Another mongoose from Murchison Falls:

The following morning after Mongoose #1, we saw another strange looking mongoose:







Again with black legs but this time a bushy black tail with a thin line visible through the middle of the tail's bushy fur. It was seen about 5:30-6:00am and was on the road toward the Nile ferry/bridge crossing. It could be a black-morph white-tailed mongoose. If not, I might lean toward bushy-tailed mongoose because of the bushy tail and the habitat, even though the known distribution map is still a few 100s of km from where we saw it. But at least Wikipedia does specify its distribution map is yet to be completely discovered.

3. A gerbil we saw at night at Murchison falls:  
I'm pretty sure this is a bushveld gerbil. But I'm curious to get confirmation or a second opinion from experts.



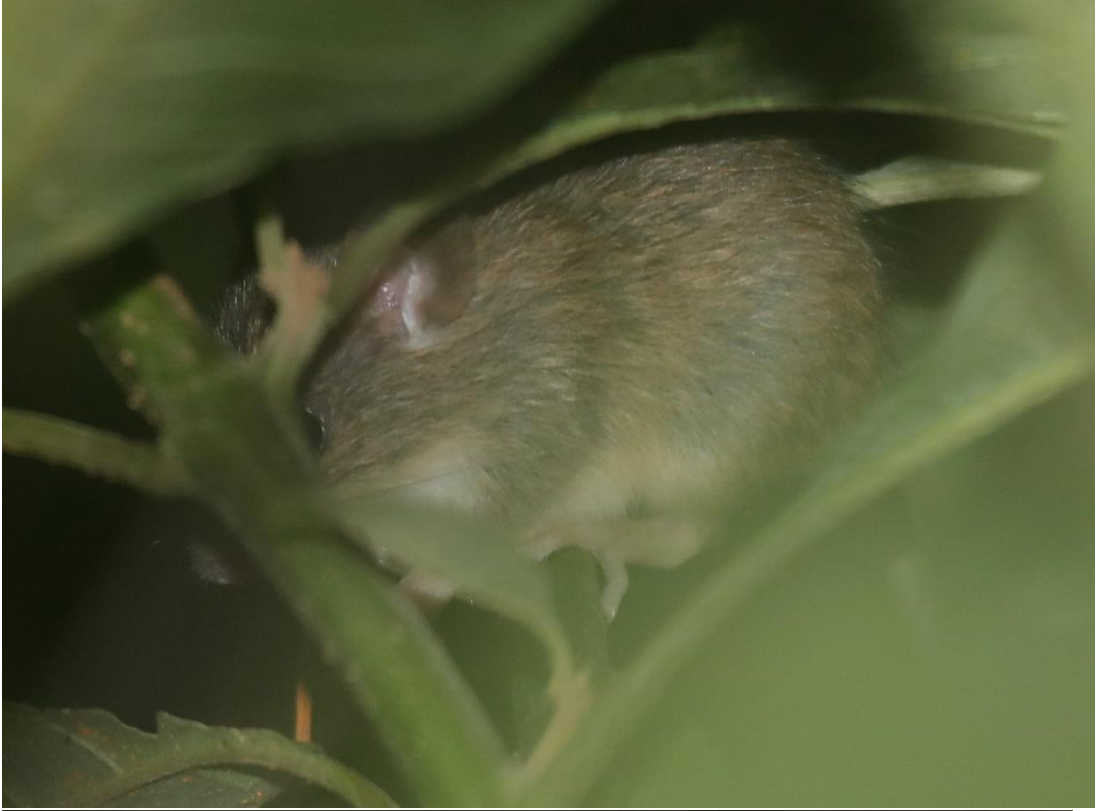


4. One of a few different rodents we saw in Semliki National Park pre-dawn, and the only one we were able to barely get a picture of:



This was in the thick rainforest between the road and the hotspring opening area, around 6:30ish or a little earlier. It was in the vegetation but only a meter or 2 off the ground. My hunch is “Link Rat” (*Deomys ferrugineus*) which is also named Congo Forest Mouse – which sounds reasonable considering the habitat.

On the subject of mice – we saw this mouse outside the restaurant at Topi Lodge in Ishasha sector at Queen Elizabeth National Park, around 20:30 in a tree, at our eye-level at the restaurant which was about 2-ish meters off the ground







To me it looks like a Gray Climbing Mouse because in one of the pictures it looks like a dark area on its lower back which could be the black stripe along the back of a gray climbing mouse. It also occurs in this area and fits the habitat type.

5. On with Queen Elizabeth National Park, there is this genet:







Not sure if it's another rusty-spotted, but the spots look a little servaline-y. However the back of the tail is all black, which probably suggests Rusty-spotted

6. And on the subject of genets – we saw this melanistic genet while driving from Buhoma to Ruhija sectors of Bwindi National Parks:

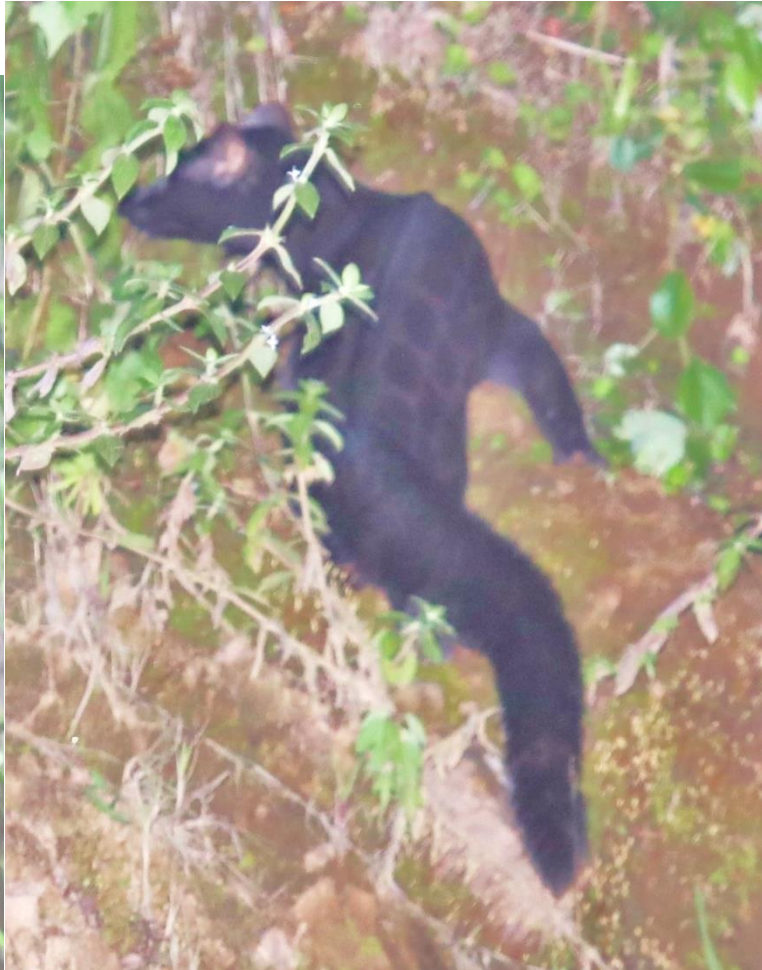






I have taken a few of the photos and edited them to increase the lighting, in order to try to identify the pattern. Again, I'm leaning toward rusty-spotted but since it's a rain forest, I figured I'd double-check.





And now a couple of squirrels:



7. Here is what we call a Carruther's Mountain Squirrel, seen at Ruhija sector in Bwindi



And another one from Nyungwe:





8. So What would this one be?







I don't think it's Rwenzori because Rwenzori has clear bands on its tail:

