



## Tawau Hills Wildlife Extension


**Destination:** Sabah, Borneo

**Season:** August – mid November

 Expert local guide & assistance from researchers in finding rare mammal species

 Spotlighting hikes in spots known for Hose's Civet and Clouded Leopards

 Hike the stunning and rugged forested hills of this little visited national park

 Stake out fruiting trees and likely locations for rare mammals and maybe Bay Cat

 In the last 3 times people have travelled here we have recorded new species!

### Dates:

Next group tour: 9<sup>th</sup> – 15<sup>th</sup> Sept 2020

### Private / Tailored Tour information:

This tour is meant to be an extension to our longer Rare Mammals of Borneo tour; however if you wish this extension can be booked as a stand along tour.

This tour can be booked anytime between April and the middle of November (subject to availability), with a peak between August – mid November. It can possibly be booked at any time of year.

So we choose the dates we do as these are right at the end of the dry season when conditions are deemed the absolute best for our targeted species. However in recent years the rainy season has been harder to predict successfully.

Whilst we have a good success rate in filling tours some people prefer to book a private tour to avoid any disappointment and guarantee the departure.

We can run this tour with any number of people (up to a maximum of 8 people), we have included the price for 2, 4 and 6 people to book this trip. However if you want to book this extension and you are the only person we can request a price for one person as well as prices for groups of 3, 5, 7 or 8 people also.

We also have flexibility for the duration of trip you would like to book.

We can also extend this extension if you would like even more time in Tawau, we can also reduce the length of this extension too. If you wish to tailor this tour anymore please let us know.

Trips for any group size and any duration are possible, please enquire further for more information on our tailored Bornean wildlife tours.

### Prices (2020 season):

Group Tour (6 nights)  
 £860 per person (6 people)  
 £895 per person (5 people)  
 £970 per person (4 people)  
 £1,050 per person (3 people)  
 £1,550 per person (2 people)  
 £1,875 per person (1 person)

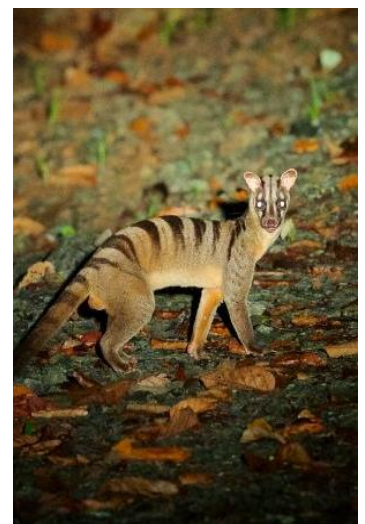
### Overview

**Day 1:** Tawau Town / Tawau Hills – Upland Station

**Days 2-5:** Tawau Hills – Upland Station

**Day 6:** Tawau Hills – Lowland Station

**Day 7:** Tawau Hills – Tabin WS





# Tour Information

## Introduction

Borneo is one of the world's greatest wildlife watching destinations and despite the ongoing deforestation around the island for the palm oil plantations there are still many areas of wonderful wilderness left. Including places which are currently unknown to the wider world and several locations which are just coming to prominence now. Tawau Hills National Park is one of these newer places, for the last couple of years scientists, conservationists and researchers have been travelling here and have found a wealth of wildlife and recorded many species which were hereto unknown from this location. In fact in Royle Safaris first group tour here (August 2018) which was the first group of tourists to visit Tawau on a specific wildlife watching tour ever, we discovered 4 species of mammals which had not been recorded in the park before – including the wonderful Kayan slow loris.

What makes the Tawau hills so special is there rugged and pristine terrain, the hills have made sure that the large hard wood trees have remained free from logging for centuries and in fact the world's tallest tropical tree in the world is known from here. These pristine forests are home to incredible wildlife and that is what we are here to see. There are several targeted species here but all will require a good amount of effort and luck. One of the top potential species here is probably the rarest animal in Borneo, the extremely rare and poorly understand Bay cat. We had been in touch with the researchers of the cat species in Borneo and by using their expertise and resources we now know that the most reliable records (camera trap records) for the Bay cat, come from here.

Also in the forested hills here are some other species that are near mythical in their elusiveness, we will try for tufted ground squirrel as well as Hose's civet whilst here, but all mammals are so little understood that seeing any of them will require a lot of luck.

We believe that by combining this itinerary with our longer Rare Mammals of Borneo tour you will get the best overview of Bornean wildlife (particularly mammals). For information on how to book both of these trips and combine them please contact us.

Below is our itinerary, for further information, photographs and booking information please contact us further.

## Itinerary

---

### Day 1 **Tawau Town / Tawau Hills National Park** *Arrival & Hiking*

**Accommodation:**

Reserve Guest House

**Food:**

Only dinner is included today.

**Transportation:**

Private vehicle & Walking.

Today you will be collect from the airport in Tawau and start our drive towards the nearby Tawau Hills National Park. We recommend you arrive early in the morning as it is a few hours (5-6 hours) hike to get to our accommodation up the hills today. If we have time we will arrive at the lowland station and rearrange our luggage, sending some up with porters before hiking up ourselves. If we do not have time to make it up there today we will spend the night down in the lowlands and in the evening / night have a night walk around the gardens here which have results in Malay civets, Sunda colugos and a wealth of frogs, snakes and other wildlife after dark.

The walk up the hills is around 10km hike up through the dense forest to the accommodation. Along the way we recommend keeping an eye out for wildlife and bearded pigs, Bornean Muller's gibbons and various species of birds can be seen on the hike up.

When you reach the top you will rest and settle in before having a night walk around the trails here to see if you can spotlighting some wildlife.

---

### Days 2-5 **Tawau Hills National Park (Upland)** *Wildlife Watching*

**Accommodation:**

Reserve Guest House

**Food:**

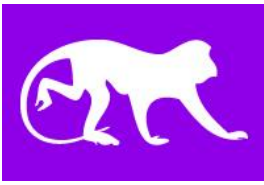
All of our meals will be cooked and served by our cooks in the hill station accommodation.

**Transportation:**

Walking.

When in the forested hills for 4 full days we will be deep in the heart of the Tawau Hills, we will walk around 1-2km every day to different areas in the forest which we believe are good areas for wildlife. We will then stake out these places for a few hours to see if any wildlife comes to these places. Several species can be seen around the accommodation including Brook's squirrel, ear-spot squirrel and Whithead's pygmy squirrel.

There are many other species here in this forest including gibbons, various civets, many species of birds and also some rare mammals such as clouded leopards and the fabled tufted ground squirrel. Whether or not we find one of



the very rare species (including the bay cat) we don't know but we should see plenty of other wildlife in the stunning and diverse Tawau Hills.

In the late evening or just after dark we will also have the option for night walks, there are a few streams around here which can be very productive for amphibians and reptiles and maybe a very rare mammal (the poorly understood Hose's civet). There are also other nocturnal species around such as Kayan slow loris and whiskered flying squirrel which can be seen with some effort too.

---

## Day 6 **Tawau Hills National Park (Lowland)** *Hiking & Wildlife Watching*

### Accommodation:

Reserve Guest House

### Food:

Breakfast will be served at the accommodation up the hill, lunch will be a packed lunch and then dinner in the lowland station.

### Transportation:

Walking.

This morning you will have one more chance for wildlife in the hills of Tawau, before heading back down the hills to the lowland accommodation. On arrival there you will have the rest of the afternoon free to rest and relax and then after dinner you will be taken out for another night walk around the gardens again.

---

## Day 7 **Home** *Travelling & Departure*

### Accommodation:

NA

### Food:

Breakfast will be at the lowland station accommodation and no other meals will be served today.

### Transportation:

Private vehicles & International flight.

This morning we will have breakfast and then head to the town of Tawau to catch your return flight home.

### **Your tour and all Royle Safaris services end upon transfer to the airport**

Please note that the itinerary stated above is correct as our planned intentions for the tour. However adverse weather conditions and other local considerations can necessitate some modifications of the itinerary during the course of the tour; any changes will be made to make the best of the time, weather conditions and other constraints forced upon us and all changes will be made in conjunction with our terms and conditions.

### Tour Inclusions

Absolutely everything mentioned in the above itinerary is included (except where it is expressly mentioned as an optional extra).

- All accommodation as mentioned above or of a similar standard as mentioned.
- All meals as mentioned in the itinerary; **(lunches and dinners are not included)**
- Bottled mineral or purified (filtered or boiled) water will be provided throughout and on request.
- Private vehicles and for all transfers and safari drives / cruises.
- English speaking local driver and naturalist guide with years of experience in working in the areas we are travelling.
- All fuel, tolls, taxes and other expenses relating to driving.
- Professional zoologist escort provided by Royle Safaris if requested an available.
- All safari drives, hikes, boat trips and night safaris as mentioned in the itinerary.
- A selection of field guides of the local areas will be available on request from the zoologist escort (if available).
- Also documentaries about the local area are sometimes available.
- Entrance fees and permits needed.

### Tour Exclusions

Nearly everything you will need is included in the price you have already paid for the tour. However there are some things not included.

- International flights to and from the tour start and end points.
- Travel insurance including any fees that result from emergency medical or evacuation needs.
- Visa fees for entering the country(s).
- Vaccinations and any medication are not included.
- Any food other than the meals provided and mentioned in the above itinerary; **(some lunches and dinners are not included)**
- Any drinks not including in the meal.
- Any items of a personal nature are not included, such as souvenirs, medication, toiletries, laundry and phone calls.
- Tips are also not included.
- Any departure taxes which may be due when leaving are not included (but may be included in the cost of your flights).

**Please refer to our Terms & Conditions (<http://www.royle-safaris.co.uk/terms-conditions/>) before booking any trips – email or paper copies of Terms & Conditions can be provided if needed**